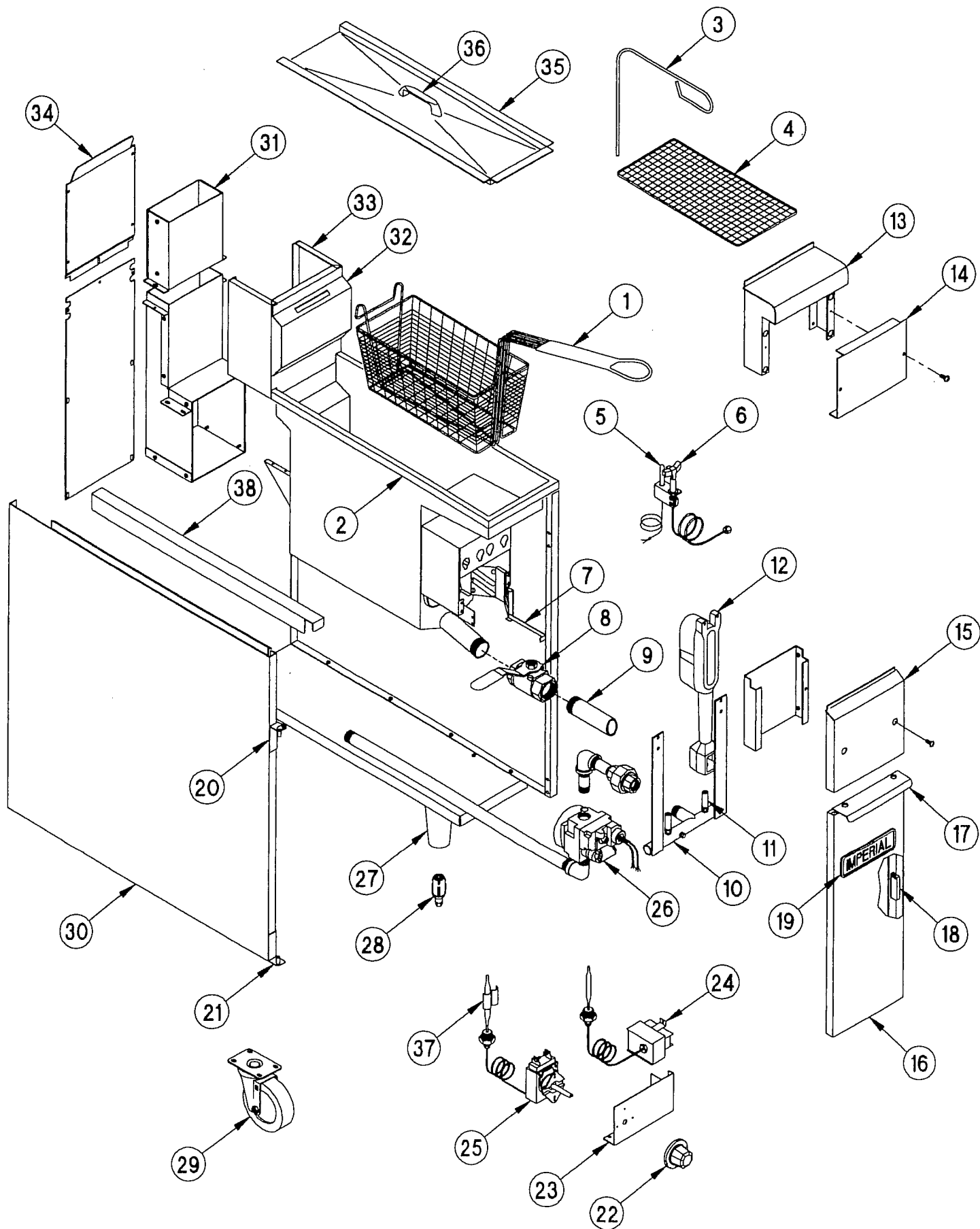


# IF-25 SERIES FRYERS

## REPLACEMENT PARTS FOR ALL IF-25 MODELS



## IF-25 Series Fryers

ITEM NO.	DESCRIPTION	PART #	IFS 25
1	Frying Basket (L 12-3/4" xW 6-1/2" xD 5-1/4")	2035	1
2	Vessel Assembly - S/S 2 Tube Fryer	28194	1
	Vessel Assembly - Plain Steel 2 Tube Fryer	28197	N/A
3	Goofer Rod - Declogger	28087	1
4	Crumb Screen / Fine Mesh (13-1/2"x 6-3/4")	3069	1
5	Thermopile	1096	1
***6	Pilot Burner - NAT.	0310 & 2031-2	1
***	Pilot Burner - L.P.	0311 & 32105	1
***	Pilot Bell Orifice # 21 - NAT.	2031-2	1
***	Pilot Bell Orifice # 11 - L.P.	32105	1
7	Diffuser	0308	2
8	Drain Valve	1281	1
9	Drain Extension	30864	1
10	Gas Manifold - 2 Tube Fryer	1380	1
11	Orifice - NAT.	1625-36	2
	Orifice - L.P.	1625-51	2
12	Burner	1225	2
13	Landing Ledge - On Range Match Fryer	28009	1
14	Front Panel - On Range Match Fryer	28063	1
15	Front panel - On Range Match Fryer	28068	1
16	Cabinet Door Assembly	28107	1
	<b>ASSEMBLY INCLUDES NEXT 3 ITEMS</b>		
17	Door Handle	28046	1
18	Door Magnet	1830	1
19	Imperial Logo	35840	1
	Logo Speed Nut	36569	2
20	Upper Door Hanger	28048	1
21	Lower Door Hanger	28050	1
22	Operating T-Stat - Knob Only	1176	1
23	T-Stat/Hi Limit Bracket	28076	1
24	Hi Limit Switch	1177	1
25	Operating Thermostat	1175	1
26	Comb Gas Valve - NAT. (White-Rogers)	1173-HW	1
	Comb Gas Valve - L.P. (RobertShaw)	1174-HW	1
27	Cone Leg With Adjustable Foot. Old Style	20130	2
	Leg, New Style	30555	2
28	Adjustable Foot	1045	2
29	Caster	1060	2
	Caster With Brakes	1061	2
30	R/H Side Panel	28030	1
	L/H Side Panel	28031	1
31	Upper Flue Assembly - 2 Tube Fryer	28238	1
	Lower Flue Assembly - 2 Tube Fryer	28239	1
32	Basket Hanger	28229	1
33	Vessel Back Panel	28232	1
34	Upper Structural Back	28262	1
	Lower Structural Back	28263	1
35	Vessel Vat Cover W / Handle - (23-5/8"x 6-1/8")	28264	1
36	Handle	1090	1
37	Probe Holder Bracket	28077	1
38	Joiner Strip IFS-25	28269	1
***	Side Splash - Left Or Right - Square Or Tapered	28032	1